



KING TIDES AND OUR RISING SEA LEVELS

Page 7



RaeQuan leads M.P. past Arlington in big-time rivalry game

By Micheal Rios

The Marysville-Pilchuck gymnasium was packed with spectators who came out in droves to witness the highly anticipated matchup between the M.P. Tomahawks (13-3) and Arlington Eagles (11-4) played on January 23. After starting out the season just (1-3), the Tomahawks had been on a tear by way of riding an impressive 12-game winning streak led by 6'5" senior shooting guard and Tulalip tribal member, RaeQuan Battle.



See **Tomahawks**, page 9

PRSR STD
US Postage
PAID
Sound Publishing
98204

Tulalip Tribes
6406 Marine Drive
Tulalip, WA 98271

Computers, Videos, Music, Lights: Boys & Girls Club is Building Future in Multimedia for Tulalip Teens

Natosha Gobin (center), Lushootseed Language Teacher, gives the opening prayer at the Groundbreaking Ceremony.



See **Groundbreaking** page 6



TULALIP TV

www.tulaliptv.com

Not getting your SYS?

Contact Rosie Topaum at
360.716.4298 or email
rtopaum@tulaliptribes-nsn.gov

Tulalip Tribes Vision

We gathered at Tulalip are one people.
We govern ourselves.
We will arrive at a time when each and every person has become most capable.
Together we create a healthy and culturally vibrant community

Tulalip Tribes Mission

We make available training, teaching and advice, both spiritual and practical.

Tulalip Tribes Values

1. We respect the community of our elders past and present, and pay attention to their good words.
2. We uphold and follow the teachings that come from our ancestors.
3. It is valued work to uphold and serve our people.
4. We work hard and always do our best.
5. We show respect to every individual.
6. We strengthen our people so that they may walk a good walk.
7. We do not gossip, we speak the truth.

Tulalip Tribes 1-800-869-8287

The Tulalip Tribes are successors in interest to the Snohomish, Snoqualmie and Skykomish Tribe and other tribes and bands signatory to the Treaty of Point Elliot, January 22, 1855

See-Yaht-Sub, the weekly newspaper of the Tulalip Tribes

Manager: Sara "Niki" Cleary, 360.716.4202
email: ncleary@tulaliptribes-nsn.gov

Reporter: Micheal Rios, 360.716.4198
email: mrios@tulaliptribes-nsn.gov

Reporter: Kalvin Valdillez, 360.716.4189
email: kvaldillez@tulaliptribes-nsn.gov

Tulalip News Manager/Design: Kim Kalliber, 360.716.4192

email: kkalliber@tulaliptribes-nsn.gov

Digital Media Coordinator: Roger Vater, 360.716.4195
email: rvater@tulaliptribes-nsn.gov

Administrative Assistant: Val Williams, 360.716.4200
email: vwilliams@tulaliptribes-nsn.gov

Volume 40, No. 4, February 2, 2019

Published once-a week with special issues by the:

Communications Dept. Tulalip Tribes
6406 Marine Drive, Tulalip, WA 98271
360-716-4200; fax 360-716-0621
email: editor@tulaliptribes-nsn.gov

Deadline for contribution is Monday, with publication on the following Saturday.

In memoriam: Frank F. Madison, 1923-2002
Sherrill Guydelkon, 1945-2008

| TULALIP TV - Ch. 3 / 503 (HD) | | |
|---|---|----------|
| Week of - Monday 2/4/19 thru Sunday 2/10/19 | | |
| Time | Show | Duration |
| 12:00 AM | Tulalip Spotlight Profiles of Tulalip citizens who are making a difference in our community. Tulalip athletes, artists, business people, and other influencers. | 0:30 |
| 12:30 AM | Tulalip Community Timely and informative topics including high school sports, tribal events, Native American culture, and more. | 0:30 |
| 1:00 AM | NWIN Northwest Indigenous News - Inspiring and educational stories about Native American Tribes from around the Northwest and across the nation. | 0:30 |
| 1:30 AM | Growing Native - Northwest: Coast Salish From canoe journeys to language revitalization, Host Chris Eyre discovers the resilience of the Coast Salish Tribes of the Pacific Northwest. | 1:00 |
| 2:30 AM | Native Report - 1210 Visit Little Big Horn Battlefield National Monument in Montana, then meet artist Ben Pease and view his works of art with Crow influences. | 0:30 |
| 3:00 AM | Creative Native - Ep 405 'Honoring Our Mothers'; This fun episode features projects to soothe the hearts and hands of hard-working women, including bath salts and hand creme. | 0:30 |
| 3:30 AM | The Dugout 19 young people, off the grid on an island in the Yukon River, must carve a sea-going canoe true to an ancient design to carry them off the island. | 1:30 |
| 5:00 AM | Hunting in Wartime Tlingit veterans from Hoonah, Alaska who saw combat during the Vietnam War. The veterans talk about surviving trauma, readjusting to civilian life. | 1:00 |
| 6:00 AM | Making of a Porky Roach The porky roach, worn by male dancers, is the universal headdress worn today in the powwow arena. A complete guide to construction. | 0:30 |
| 6:30 AM | Sitting Bull - A Stone in My Heart A powerful journey into the life and spirit of a legendary figure of whom people have often heard of but don't really know; a true American. | 1:30 |
| 8:00 AM | Tulalip Spotlight Profiles of Tulalip citizens who are making a difference in our community. Tulalip athletes, artists, business people, and other influencers. | 0:30 |
| 8:30 AM | Tulalip Community Timely and informative topics including high school sports, tribal events, Native American culture, and more. | 1:00 |
| 9:30 AM | NWIN Northwest Indigenous News - Inspiring and educational stories about Native American Tribes from around the Northwest and across the nation. | 0:30 |
| 10:00 AM | Heritage Girls Basketball Heritage "Lady Hawks" Basketball - 1B District Round 1 Championship, played Thursday 1/31/19 | 1:00 |
| 11:00 AM | Heritage Boys Basketball Heritage Boys "Hawks" Basketball - 1B District Round 1 Championship, played Thursday 1/31/19 or 1B District Round 2 played Saturday 2/2/19 | 1:00 |
| 12:00 PM | Tulalip Spotlight Profiles of Tulalip citizens who are making a difference in our community. Tulalip athletes, artists, business people, and other influencers. | 0:30 |
| 12:30 PM | Tulalip Community Timely and informative topics including high school sports, tribal events, Native American culture, and more. | 0:30 |
| 1:00 PM | NWIN Northwest Indigenous News - Inspiring and educational stories about Native American Tribes from around the Northwest and across the nation. | 0:30 |
| 1:30 PM | Growing Native - Northwest: Coast Salish From canoe journeys to language revitalization, Host Chris Eyre discovers the resilience of the Coast Salish Tribes of the Pacific Northwest. | 1:00 |
| 2:30 PM | Native Report - 1210 Visit Little Big Horn Battlefield National Monument in Montana, then meet artist Ben Pease and view his works of art with Crow influences. | 0:30 |
| 3:00 PM | Creative Native - Ep 405 'Honoring Our Mothers'; This fun episode features projects to soothe the hearts and hands of hard-working women, including bath salts and hand creme. | 0:30 |
| 3:30 PM | Bizou - Ep 34 "Trout" Come sing and dance with Bizou as she takes you on a picturesque journey into the wonderful world of Trout, the hardest fish in the water. | 0:30 |
| 4:00 PM | Olive Dickason Olive Dickason's work promotes the recognition of indigenous people as our founding civilization. One could say that Olive Dickason "wrote the book" | 1:00 |
| 5:00 PM | Tulalip Spotlight Profiles of Tulalip citizens who are making a difference in our community. Tulalip athletes, artists, business people, and other influencers. | 0:30 |
| 5:30 PM | Tulalip Community Timely and informative topics including high school sports, tribal events, Native American culture, and more. | 0:30 |
| 6:00 PM | NWIN Northwest Indigenous News - Inspiring and educational stories about Native American Tribes from around the Northwest and across the nation. | 0:30 |
| 6:30 PM | Heritage Girls Basketball Heritage "Lady Hawks" Basketball - 1B District Round 1 Championship, played Thursday 1/31/19 | 1:00 |
| 7:30 PM | Heritage Boys Basketball Heritage Boys "Hawks" Basketball - 1B District Round 1 Championship, played Thursday 1/31/19 or 1B District Round 2 played Saturday 2/2/19 | 1:00 |
| 8:30 PM | Growing Native - Northwest: Coast Salish From canoe journeys to language revitalization, Host Chris Eyre discovers the resilience of the Coast Salish Tribes of the Pacific Northwest. | 1:00 |
| 9:30 PM | Tulalip Spotlight Profiles of Tulalip citizens who are making a difference in our community. Tulalip athletes, artists, business people, and other influencers. | 0:30 |
| 10:00 PM | Tulalip Community Timely and informative topics including high school sports, tribal events, Native American culture, and more. | 0:30 |
| 10:30 PM | NWIN Northwest Indigenous News - Inspiring and educational stories about Native American Tribes from around the Northwest and across the nation. | 0:30 |
| 11:00 PM | Olive Dickason Olive Dickason's work promotes the recognition of indigenous people as our founding civilization. One could say that Olive Dickason "wrote the book" | 1:00 |

This Schedule is subject to change. To see an updated schedule, go to:
<http://www.tulaliptv.com/tulaliptv-schedule/>

The Tulalip TV Program schedule is always available at www.TVGuide.com enter zip code 98271, select Tulalip Broadband. You can find the weekly schedule at <http://www.tulaliptv.com/tulaliptv-schedule/>. Also, the TulalipTV Program Schedule is always available on Tulalip Broadband Channel 44 (TV Guide Channel)

Marie Zackuse , Chairwoman Report



of beginning the work to make our tribal government more sustainable for future generations.

One of the first steps in the reorganization was to create a new management structure to reflect the needs of an organization that has grown rapidly over the last fifteen years. The growth of tribal government reflects the growing needs of our membership overtime and what our business development has made possible.

We began creating four new divisions of government with a Managing Director over each division: Tribal Operations, Health Services, Community Enrichment and Regulatory Affairs.

Last Wednesday, the first of four open house events was held at the Don Hatch Youth Center to introduce the newly formed Tribal Operations division. It is comprised of Construction, Finance, Grants, General Services, Human Resources, Media

Several months ago we undertook a comprehensive reorganization of tribal government designed to improve efficiency, reduce redundancies, and improve services to membership, with the objective

and Marketing, Projects, Property Management and Public Works. The event offered the opportunity for employees and tribal membership to meet representatives of each of these areas, led by Managing Director Michelle Gettsy.

Those in attendance had a chance to visit information booths describing the role of each department, meet staff members and learn a bit about the major projects currently underway or planned for the near future. I am proud of their work and truly value the importance of their collective mission to provide services to tribal government and to our membership.

The event offered the opportunity for members to meet our new Chief Financial Officer, Jean Strafford. Jean grew up in the Warm Beach and Marysville areas and is a graduate of the University of Washington. She brings with her a wealth of financial accounting experience

as well as collaborative work with human services and other tribal organizations. She comes to us from Sealaska Corporation and formerly served as Finance Director for Catholic Community Services.

We have given Jean a challenging assignment. She will be ensuring we utilize our existing financial software (MUNIS) to its fullest, providing user training and outreach about Tulalip's financial systems and educating our teams on the importance and value of comprehensive accounting services.

I am confident we have the right leaders and systems in place to begin this significant journey toward a strong future for our tribal government. I raise my hands to everyone involved in helping us get underway. I also raise my hands to the leaders we have had over the generations that have helped to build our organization to what it is today.

Welcome Jean Strafford, Tulalip's new CFO



By Niki Cleary

Since September 2018, Tribal government has been without a CFO. Jean Strafford, CPA, was hired after a months-long search and recently took the reins of the Tulalip Finance Department. This UW graduate was born and raised locally, though much of her career has been spent in Alaska.

Some of Jean's short term goals are to replace outdated accounting systems, and streamlining others. In the next two years, she'll be focused on Membership Distributions.

"I'm here to help meet the goals of the organization and to help make things run smoother.

We need a new membership distribution system that includes a portal for members. Technology has advanced so much that the old system no longer integrates with the current systems. There's no way for us to provide the membership access and accessibility without a new system. They [Tulalip citizens] need that in

this day and age. Another goal will be to develop and provide regular ongoing training for finance and non-finance staff. With technology, you need regular access to training."

In the few days she's been on the job, Jean is focused on the talent and potential of her team. One of her first orders of business is to fill the 12 vacant positions in the department.

"This is a really professional organization, committed to doing things right and serving the membership," she explained. "There has been some turnover and vacancies. Without staff you can't accomplish your goals. With turnover you lose efficiencies and historical knowledge. You start back at square one and need more people to just maintain. Without having those people you tend to push the things that aren't on fire off to the side, but those are the things that are ultimately going to make a difference for people. We have some challenges and staffing needs and we'll address those one-by-one."

When asked to explain her

job, Jean described a CFO as both a servant and a guardian. She pointed out that regulation and procedures are in place to protect the assets of a business or government.

"If you're out of compliance it can drain the resources of an organization if things aren't done right. Finance touches everything from budgeting, collecting revenue, managing grants and paying the bills. Without all of that, our service providers, project managers, and construction folks can't do their work."

Clean accounting can also bring in revenue, Jean continued, "The better we are at managing grants, the more grant funding we will get."

While the nuts and bolts of finance is the same from company to company, Jean feels she still has a lot to learn.

"Systems, principles, rules and regulations are the same, but each organization applies them to their needs. I'm learning the current processes. Then, with my knowledge,

Continued on next page

we can make things run smoother.”

Of herself, Jean said, “I grew up in the Warm Beach and Marysville areas. I graduated from the University of Washington with a Bachelor’s in Business Administration and a concentration in accounting. I moved to Juneau, Alaska and spent most of my career in Juneau. “I’ve worked for the Sealaska Corporation and

worked for the State of Alaska Department of Transportation. I’ve been the Finance Director and Executive Director for Catholic Community Services, so I have a human services background also. I’m married, we have grown children and two dogs. We’ve moved back to the area permanently. We like to explore the outdoors with our dogs and spend time with family.”

At the end of the day, Jean explained, she is here to help.

“I’m driven by service. I like to see the big picture, see what people need and help our department meet those needs if it is within our scope.”

Tribal Operations is under construction



By Niki Cleary

Under the Board directed reorganization of Tribal Government, tribal departments were divided into four divisions, each lead by a Managing Director. The divisions are Tribal Operations, Community Enrichment, Health Services and Enforcement. Recently, the Tribal Operations division held an open house to showcase some of the changes.

Managing Director Michelle Gettsy said, “I’m feeling really positive about where we’re at right now. Last night (January 23rd), was a positive showing of our whole umbrella. When I meet with my direct reports, we all have positive ideas about what we’re trying to do.”

Michelle shared the latest organizational chart for her division, which shows the departments under the Tribal Operations umbrella, and

explained that some areas remain relatively unchanged, while others are slated for overhaul.

Human Resources

“Human Resources is going through their own restructure right now. They are making huge changes. They are moving back to the core of what Human Resources should be.”

Nationally, human resources departments can encompass everything from employee recruiting, retention, career development and labor relations to payroll, benefits and training. Human Resources is currently hiring additional staff and realigning their purpose and tasks.

“One of the major projects they will do is a wage study and compensation analysis for tribal government,” described Michelle. “That is tribal wide, not just for the Tribal Operations division.”

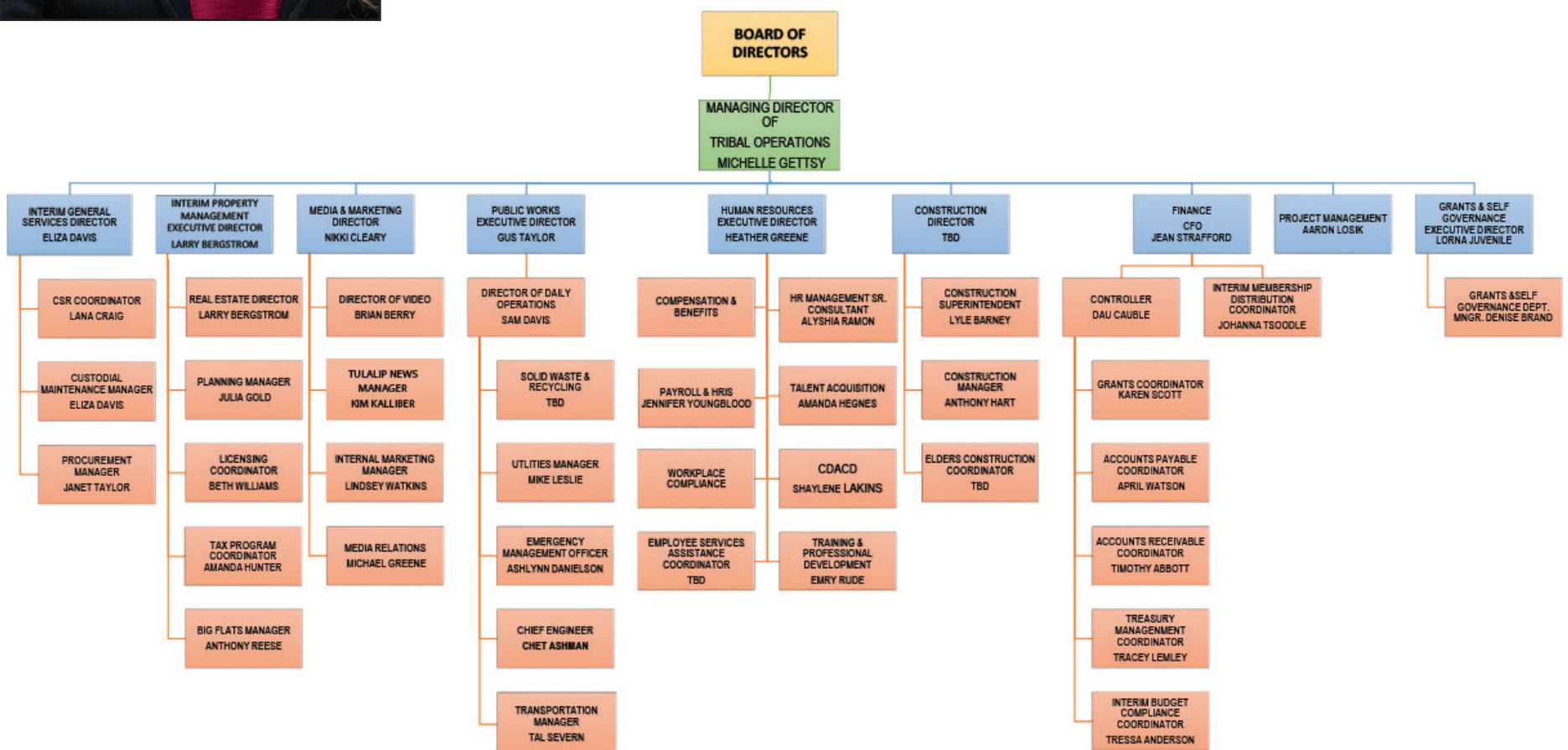
She acknowledged that

Tulalip has conducted wage studies in the past.

“Since the GSA (General Services Administration) wage study was before my time, I don’t feel comfortable speaking to it. For us, the four Managing Directors, this is about getting a good look at where we are currently and how job descriptions match with wages and compare to both outside entities and other tribes.”

Human Resources will also be ensuring that employee handbooks are up to date and consistent with other policies.

“Heather Greene, the Human Resources Executive Director, is a wealth of knowledge,” said Michelle. “She was hired specifically by the Board of Directors to restructure Human Resources. I want to make sure that our policies work seamlessly together, instead of sometimes contradicting each other.



I work with her to make sure that everything goes through a process before it goes out. She is working really hard with Human Resources staff on this restructure.”

Construction

The Construction Department was formerly a function of the Housing Department. It is now a Tribal Operations Department and one of Michelle’s priority areas.

“Separating HUD (Housing and Urban Development) and Construction was one of my tasks,” explained Michelle. “One of my next executive hires is a Construction Director who can manage both the special projects side that Lyle Barney works on and Tribal Construction which Anthony Hart is over. I’m looking for a tribal member who has vast knowledge of construction and who can come in and help me make that a cohesive team. Building that team will be a huge task for the Construction Director.”

Michelle called it a work in

progress.

“We have a construction office by the museum, we have construction offices and cubicles in the administration building and we have construction offices in Silver Village, then we have Lyle who works out of the Public Works office. We want everyone consolidated and working together as a team.”

General Services

General services integrates several departments that otherwise don’t clearly match with other departments.

“General services covers Lana Craig who manages the CSRs (Customer Service Representatives) and mailroom, Custodial Maintenance and Procurement, which includes ti kupa?ali, the espresso kiosk. These were all part of the Administrative division, but in particular, these three programs didn’t fit with anything else,” described Michelle.

“Custodial is a really large department,” she continued. “There

are 38 employees, but it isn’t part of Public Works and didn’t quite fit anywhere else. The creation of a General Services Department covered these programs that are very important but don’t really fit with other departments.”

Michelle explained that all of the General Services departments are important for day-to-day operations and employee morale. ti kupa?ali is currently working on a business plan to explore the idea of a second location, as well as opening an off-site kitchen in order to provide expanded menu choices.

“Janet Taylor with Procurement also manages ti kupa?ali,” said Michelle. “She is really building the ti kupa?ali brand. We’re also looking at centralizing purchasing so we can leverage our buying power.”

There are numerous other changes in the works, big and small. Real Estate and Project Management are also working on changes. Michelle committed to future updates

to keep the community informed. In the meantime, she said she’s enjoying the work.

“I found a quote that I liked the other day, it’s a Buddha quote, ‘Change is never painful, the resistance to change is painful,’ I’ve found that this is true in restructures. When I explain why we’ve moved things and how we’ve moved them, people might not like it, but they’ve said it makes sense. People don’t like change because they feel ownership of their programs, and that’s amazing because when people feel ownership they treat their programs better and work harder.

“I’m so thankful for every single one of my teams and team members, they have been amazing to work with,” she continued. “I am blessed for this opportunity and so thankful that the Board of Directors felt they could trust me with all of these programs.”

Quil Ceda Creek Casino update

By Micheal Rios

After months of delay, construction is again underway on the \$125 million casino and parking garage that will replace the aging Quil Ceda Creek Casino (locally referred to as ‘the Q’). The lengthy pause in construction was primarily due to the Tulalip Tribes undergoing a strenuous process to replace the original general contractor, Tribal Designs/Wright Hotel Development.

“Due to a lawsuit brought against the Tulalip Tribes by Tribal Designs/Wright Hotel Development we have not been able to comment in any detail on the reasons for the termination of the agreement with Tribal Designs/Wright Hotel Development,” stated Chairwoman Marie Zackuse. “We are currently in mediation and hope to find a mutually acceptable solution between the Tulalip Tribes and Tribal Designs/Wright Hotel Development.”

Andersen Construction is the new design-build contractor. Presently, Andersen Construction is starting with site work



Concept rendering of the Quil Ceda Creek Casino.

that includes soil improvement work and grading, installing concrete footings, and will soon start on the underground plumbing and electrical.

The multi-million dollar project will relocate the Q facility from its current location to a fifteen-acre property across the street on Northeast 33rd. Replacing

the Q Casino was based on a number of factors, the most prominent being a stagnant revenue stream that is unable to grow due to logistical and structural challenges posed by the current facility. Also, with an ever growing population, it is critical to generate more revenue in order to meet the costs associated with more

Continued on next page

and more Tulalip citizens.

“We’re replacing [the existing Q] because it is bursting at the seams,” explained Les Parks, Board of Director Treasurer. “The revenue cannot grow anymore, they are using every square foot they can, and our customers are screaming for more machines and a hotel to stay at. This new journey is going to get us there.”

The project cost is “rolled into the syndicated loan that includes the new Quil Ceda Creek Casino, its parking structure, and the future Gathering Hall,” continued Les. “This is the same amount that was approved by General Council three years ago. Without increasing the loan amount, we were able to add in the hotel by extending the deferred payment process, which is typical of loans we do, to put more money towards actual construction.”

The new Q Casino will span 126,000 square feet and allow for 1,500 gaming machines, a lofty increase from the current 1,000 operating at the existing QCC facility. The 500 extra slot machines will bring in millions of additional gaming revenue annually.

Besides the increase of slot machines, there will be expanded table games, an innovative dining hall experience with multiple cooked-to-order food venues, an upgraded entertainment venue, and a state of the art smoke elimination system included in the new locals casino.

Current parking at the Quil Ceda Creek Casino has always been a nuisance for regulars. The new Q will solve that issue by having a parking garage that holds 1,068 stalls, plus surface parking for 684 vehicles. That’s total capacity for 700+ more

vehicles than currently available.

The design schematic leaves the option open for the opportunity to build on a hotel to complete a casino resort destination stay, like the Tulalip Resort Casino.

“We have to maintain our competitive advantage by staying up to date with what’s going on in the gaming industry,” said Vice-Chairwoman Teri Gobin. “The Emerald Queen will be opening their new facility soon, Ilani recently had a renovation, and Snoqualmie is looking to add a second tower. That’s our competition and they all have or are going to build additional hotels.

“We all know the Tulalip Resort sells out every weekend, and that overflow of guests who can’t get a room with us end up staying in Marysville. That is lost revenue that we could keep if we add a hotel to

the Q,” continued Teri. “Having a hotel is very important in order to keep our customer base while providing opportunity for many new guests to experience Tulalip.”

Potentially, an add-on hotel would feature 150 guest rooms, special event space and meeting facilities, while having recreation space that includes a pool, spa and exercise room. The Tribe is also investing in street improvements to enhance ease of access to the new casino.

“We anticipate this property remaining very popular with our local customers and will also attract new gamers,” said Chairwoman Zackuse.

The new Quil Ceda Creek Casino and parking garage is expected to open February 2021.

Groundbreaking from front page

By Michael Greene

An average school day at the Tulalip Boys and Girls Club sees 150 kids before school and over 200 after. Soon, the teens that attend will have access to interactive projects such as a light up LED floor and walls that operate by digital software on an I-pad. Wi-Fi throughout the club will allow teens to access the internet, be able to watch Netflix, and do research on the computer for school projects.

On January 23, 2019, the Tulalip Boys and Girls Club held a groundbreaking ceremony for the construction of the 4,000 square-foot Teen Multimedia Center. The construction is scheduled for completion and should be operational by fall of 2019. Computers, videos, music, lights, and interactive projects will give teens the ability to utilize the technology of today.

Diane Prouty, dubbed by the kids as “Grandma Diane” has been the club’s administrative assistant for the last 20 years. She explained that the Tulalip club has always worked to be both cutting-edge and culturally relevant.

“Our last addition included an immersion learning center that we got through a grant from Robert Ballard,” she said. Ballard was responsible for

the underwater footage viewed in the 1997 movie “The Titanic”.

“He wanted youth to be able to see a live feed of a submarine when they dive down. We are only the second Boys and Girls Club to have that capability.”

At that time, the club also built a computer lab for older youth to practice computer programming and a music room for artistic expression.

This new addition is thanks to the last twenty-one years of Tulalip Boys and Girls Club auctions, golf tournaments, state capital funds and generous support from the Tulalip Board of Directors.

The current computer lab is basic compared to what is being built. The new building will be digitally integrated. All the digital components of the building including the security system, computers, lights, and music will be controlled by a manager from an I-pad, which will allow internet content to be monitored and censored appropriately.

Mark Hatch, the Club



Director, says this large addition will give teens the opportunity to plan and organize field trips with staff. This will also give teens the opportunity to work on club activities. One of those club activities is Money Matters, an educational, leadership skills building, and financial learning program that Tulalip already sends teens to in the summer before they receive their trust funds. The program will be available on the Boys and Girls Club campus after the new addition and will give youth a valuable education about spending, saving, life skills and financial

management.

Throughout the ceremony, speakers highlighted the valuable service that the club provides to the community. Though the safe environment filled with fun and educational activities is a benefit, the real power of the club is due to its caring staff.

“I am a Boys and Girls Club kid,” says councilmember Marlin Fryberg who went to the club in Everett, “it made a huge difference in my life. It takes all of us to help raise the children who come here.”

King tides and the impacts of rising sea levels



By *Kalvin Valdillez*; photos by *Kalvin Valdillez and Ben Lubbers*

Bright and early on the morning of January 25, a gathering of about thirty people met at Flintstone Park in Oak Harbor. Similar to Tulalip Bay, the waters of the Salish Sea travel into the inlet of Whidbey Island, providing a scenic view for the citizens of Island County. This morning in particular was gorgeous. While the sun emerged into the sky, fog slowly ascended from the water that was now approaching the paved boardwalk of the park. This was the event the locals came to witness, a king tide.

On the night of January 20, you may have caught a glimpse of the super blood wolf moon as the sun, earth and moon aligned perfectly. This rare lunar eclipse is also known as syzygy and causes a stronger gravitational pull and therefore, higher tides. At an estimated thirteen feet, the tide was highest at 8:28 a.m. in Oak Harbor that Friday morning. The long stretch of sand, rocks and driftwood that makes up the beach of Flintstone Park appeared to have vanished as large waves splashed against the coast.

“King tide is not a scientific term, it simply means higher than our

normal everyday tides,” explained Bridget Trosin, of Washington Sea Grant, to the crowd. “In this area, we get king tides usually in November, December, January and February. One of the situations where we get a king tide is at a perigee tide. Basically that is when we orbit the sun and as the moon passes in that close section we get higher than high tides. As the moon is hugging the earth in its orbit, it’s bulging out our ocean waters.

“The other situation is when we have a nice alignment of the sun, earth and moon, that’s where we see a nice king tide from the pull from the sun and the pull from the moon as they’re compounding upon each other. And another event happens only on January 2. That’s as Earth is orbiting around the sun, we’re closer and that creates pull from the sun and makes our tides a little larger than normal. Any one of those situations can happen at the same time and each one gives the tide a directional pull.”

Now that the Oak Harborites acquired both a better understanding as well as a live visual of a king tide, Bridget requested that each member of the group download an app to their phones called MyCoast. The purpose of the app is to measure king tides at local shores by using user submitted

photos. She then stressed that king tides are an important occurrence and the need to monitor them is crucial because they give us a glimpse into the future of what normal, or perhaps even low tides, might look like in a few decades due to sea-level rise.

Rising sea-level is a complex topic that will in time impact the entire planet. Many major cities across the world will experience severe flooding and in some extreme cases will be underwater completely. Because sea-level rise is so dynamic and there are several factors in play, it’s hard to determine exactly when specific areas will begin to see major impacts. However, the general consensus appears to be that sea-level will continue to rise at about its current rate until the middle of this century and then will actually accelerate at even a faster pace after that.

So what causes sea-level rise exactly and why should you be concerned? Since the Industrial Revolution in the 1800’s, the Earth has been heating up due to the burning of fossil fuels and the production of greenhouse gases. As the planet traps those emissions in its atmosphere, the warmer Earth gets. And as a direct result of global warming, the amount

of water in the ocean is increasing because as water heats, it expands. Another large contributing factor to sea-level rise is the melting ice caps and ice sheets happening in both Greenland and Antarctica.

“Sea-level has risen eight or nine inches in the last hundred years and it’s accelerating,” says Phillip North, Tulalip Natural Resources Conservation Scientist. “Since global warming is happening faster than we expected, that means the water is getting warmer faster and expanding. We’re getting more sea-level rise than expected. Plus, the warmer ocean is melting the ice faster. Greenland is melting faster, Antarctica is melting faster, all the continental glaciers; everything’s melting faster than we expected. We’ll see a pretty steady progression up until the middle of the century and then it will start to speed up. It does seem that anytime anyone has ever said something like that, it’s happened sooner than expected and more than expected. We are already seeing it.”

Shortly after the King Tides event in Oak Harbor, and we’re talking merely a few hours, reports from major news sources were released. Alerts from the New York Times, BBC News and CNN began



to pop-up onto people's smartphones claiming that Greenland's ice caps are indeed melting at an even much faster pace than predicted by scientists, environmentalist and conservationists.

The news was shocking to say the least and sent social media into a bit of a frenzy. The reports show ice caps in Greenland's southwest region have been melting at least four times faster in the past decade than they have over previous centuries. Due to the combination of global warming paired with oscillation, a weather phenomenon that affects air temperature, Greenland's ice caps are not only breaking off into large icebergs, which over time melts into the ocean, but are also beginning to thaw at the top of the glaciers which is causing 'rivers' of meltwater to pour into the ocean, and is subsequently melting more ice as it travels down the glaciers. Cities along the east coast of the United States will be the first to be affected and will see significant sea-level rise and are also now susceptible to more hurricanes.

Northwest tribal nations have been anticipating a rise in water for at least a few generations now. As coastal communities, Salish tribes are one the first to feel and witness the effects of sea-level rise. As you may recall, the Quinault tribe is currently in the early process of relocating both of their entire villages of Taholah and Queets because rising sea-level and high tides have already begun to flood the communities.

As sea-level rises, it has the potential to change entire landscapes. In a report released in the summer of 2018, the Projected Sea Level Rise for Washington State, evidence shows that because of the Juan de Fuca tectonic plate, many Puget Sound communities are currently sinking while Neah Bay's land is actually rising.

In addition to inundation and landform change, another huge impact sea-level rise will have on tribal communities is habitat loss, reducing marshes, mudflats and intertidal habitats. Habitat loss can cause significant changes to the food chain and as Phillip explains, this happens due to the erosion of coastlines.

"One thing we are studying in Tulalip is our outer coast," he states. "Because as sea-level rises, a couple things will happen. One, the water will be at base more often and it's the water at the base of the bluff that erodes the bluff more than anything else. But also because it will be higher than the storms that are coming in. When storms come in, you have the distance over open water that the winds are blowing, the greater the distance the bigger the waves. But also the deeper the water, the less those waves are dragging on the bottom of the ocean floor and losing energy. So the deeper the water is, those bigger waves will come further in and hit the bluff more often. So you end up with faster erosion. As it erodes faster, that means that all the

material is coming down faster.

"That material is what makes up the intertidal habitat. So how will the system deal with that, that's another important question. That's where all the clam beds, juvenile crab are and that's where all the juvenile salmon and forage fish hang out. The dynamics of the energy of the waves on the beach sorts all that material, so you end up with patches of fine sand and gravel. All of those different patches are different type of habitat, so if you change the energy on the beach, those things all change. Those changes of energy change the habitat. Most of the detrital food chain are not eating the grass and seaweed directly but they're eating it when it dies and starts to decay - that's the base of a food chain. The way the detrital material gets distributed changes the habitat for juvenile crab, juvenile salmon, forage fish and all those organisms that live in those areas."

Unfortunately, sea-level rise is inevitable. Yes, you read that correctly. In time, which is proving to be closer than we thought, all of the ice caps will melt and the world's water to land ration will increase. How much it will increase and when is still yet to be determined but if the recent news of Greenland's ice caps are any indication, scientists are predicting by the year 2100, cities around the globe can see anywhere

from three to ten feet of sea-level rise. And although the east coast will probably see the effects on a larger scale, the entire west coast along the Cascadia subduction zone could be pushed back, making many current coastal cities uninhabitable. Researchers are hoping communities can look at these statistics and estimations to plan for relocation if need be and to prepare for a series of natural disasters such as extreme floods, storms and hurricanes that could result from sea-level rise.

"Get involved in your communities," urges Bridget. "Let your planning commissioner know that this is something that you are concerned about, this is something we need to get on board with and make a priority. This is something that is extremely important to the resilience of your community."

Please visit www.WAcoastalnetwork.com to view the most recent reports and projections of sea-level rise in Washington. And be sure to check out the National Oceanic and Atmospheric Administration Sea-Level Rise Viewer at www.coast.noaa.gov/slr/ to see how sea-level rise, of up to ten feet, can impact your communities, as well as for additional information.



Due to rising sea levels, the entire west coast along the Cascadia subduction zone could be pushed back, making many current coastal cities uninhabitable.

Tomahawks from front page



RaeQuan is joined by fellow tribal members Alec Jones and T.J. Severn, both juniors on the much hyped M.P. squad. Arlington has a tribal member on its team, too, in freshman Quintin Yon-Wagner. The Tulalip ties gave even more significance to the regular season game, as many members of their families turned out to watch the athletic contest. Fortunately, everyone in attendance was treated to a very entertaining and competitive game that went down to the wire.

In the 1st quarter, Marysville-Pilchuck jumped out to an early 12-1 lead. Thanks in part to an engaged RaeQuan getting buckets from the perimeter, inside, and at the free-throw line his Tomahawks led 14-4 after the opening period.

Alec, coming off the bench, provided instant defense and on-ball pressure for the Tomahawks' backcourt.

After enjoying a 28-18 halftime lead, M.P. saw their advantage disappear when Arlington caught fire from the perimeter and made back-to-back 3-pointers. Things took a bad turn midway through the 3rd quarter when RaeQuan took an accidental elbow to the head. The contact opened up a cut along his eye and forced him to the M.P. bench while receiving medical treatment.

With their best player on the bench, the Tomahawks' offense struggled. Meanwhile, Arlington hit several consecutive jumpers to give the Eagles their first lead of the ball game. Alec scored a transition layup for the Tomahawks, tying the game at

36-36, but at the end of the 3rd quarter M.P. trailed Arlington 36-38.

The 4th quarter was a back and forth thrill ride, with players on both teams trading clutch baskets for minutes at a time. However, it would be the University of Washington commit RaeQuan proving to all onlookers why he's the number four ranked player in Washington State, according to ESPN.

In a one possession game, late in the final seconds, RaeQuan hit a dazzling step-back 3-pointer to put the Tomahawks up 54-50. Only moments later he followed up his offensive display with an equally as good defensive stop, chasing down an Eagle's guard and soaring for an emphatic block to seal M.P.'s comeback victory.

"I've been a part of a lot of close games last year. That experience

taught me to always be prepared so in those moments I don't get nervous," shared RaeQuan following the win. "It was tough building a double-digit lead against a solid Arlington team only to watch it disappear. As a team we have a lot of trust in one another. That trust makes us stay calm and we ended up going on a 9-0 scoring run after giving up the lead."

Regarding those two game changing plays he had at critical stage of the game, RaeQuan said draining the 3-pointer was the sweeter moment because the team needed the points more. Makes sense, buckets win games.

Marysville-Pilchuck has two more regular season games left before the 3A District playoffs begin February 9.



Tulalip Tribes Planning Commission Notice of Public Hearing

The Tulalip Tribes Planning Commission is holding a Public Hearing on Wednesday, February 13, 2019 at 6:00 P.M. to receive testimony from community members concerning the proposed Tulalip Bay Phase 3 Tribal Subdivision at 4321 Marine Drive near Hermosa Road.

The proponent, Tulalip Tribes propose to create 13 lots for lease to Tribal families. The Planning Commission will review a Planned Unit Development overlay rezone proposal for the "Rural Residential" zone per Tulalip Tribes Title 7 Land Use Code that governs zoning and subdivisions and related improvements and allows for increased single family residential density.

Public Testimony is scheduled to start at 6:00 p.m. at the Tulalip Administration Building, Room 264, 6406 Marine Drive NW, Tulalip, WA 98271. Written comments are due by February 11, 2019.

To provide written comments or for more information, contact Keri Adams-Lee, Associate Planner III, Tel. (360) 716-4219; email: kadams-lee@tulaliptribes-nsn.gov, or Julia Gold at (360) 716-4210, Planning Department, 6406 Marine Drive NW, Tulalip, WA 98271.

Helen Hazel “Sally” Hatch-Prouty (1937 - 2019)



Helen “Sally” Hazel Hatch-Prouty, 81, passed away January 14, 2019. She was born March 28, 1937 to Donald Hatch Sr. and Katherine Fryberg-Hatch of Tulalip, WA. Sally grew up in Tulalip, on Hermosa Beach, she spent a few years living with her Aunt Iris in Sequim, WA. She moved back to Tulalip and met Wesly and had and raised three children, Diane Charles, Audrey Charles, and Donald Charles. She also had another daughter, Mary Gates whom she blessed Pat and Ada Gates to raise. Sally worked as a cashier at the smokeshop in Tacoma, WA. She

worked in the bingo deli for a few years and she also enjoyed bagging candy for the Tulalip Tribes’ Christmas.

Sally leaves behind her children along with her brother, Donald Hatch Jr.; sisters, Illene (Chuck) James, Cynie (Max) McGee; 14 grandchildren; 40 great grandchildren; and 14 great-great grandchildren; and numerous nieces and nephews. She was preceded in death by her mother, Katherine (Molly) Hatch; father, Donald Hatch Sr.; husband, Wilbur Prouty; her son, Roger Wayne Charles; brother, Larry Hatch; sisters, Evelyn Cross, Don-

na Muir, and Barbara Hatch; great grandson, Josiah James; and great granddaughter, Kristina Johnson. She enjoyed bowling, bingo, country music, slots, and most of all, her family, especially at Christmas time.

Visitation was Thursday, January 17, 2019 at 1:00 p.m. at Schaefer-Shipman Funeral Home. A private evening service was held. A Funeral Mass was held Friday, January 18, 2019 at 10:00 a.m. at St. Anne’s Catholic Church with burial following at Mission Beach Cemetery.

Rosemary Patricia Boggess, August 10, 1938 – January 24, 2019

Rosemary Patricia Boggess, 80, carried the name ye’stad meaning “small rose” in the Lushootseed language. She was born on August 10, 1938 in Croydon, England to George and Alice Beavers. She loved traveling and making arts and crafts with her sister Jean (Mick) Adams. She looked forward to her regular visits with Jean in her homelands of England. Rosemary was sixteen years old when she married her sweetheart Donald Boggess on July 5, 1954. She met Donald in England where he was stationed in the Army and remained married for 42 years. They had two children including the late Britt Boggess and Scott Boggess. Rosemary leaves behind seven grandchildren Jason, Tonya, Jake, Brooke, Donald, Heather and Erik.

She was always amazed at the sight of her great grandchildren who brought her so much joy, Preston, Mckynzie, Cameron, Jesse, Angelica, Chance, Charlie, Patience, Skyler, Kayelynn, Myles, Elliot, Maya, Kyle, Shaelyn, Deeanna, Valarie, Nolee, and Erik Jr.

Rosemary and Don made Tulalip their home for many years. Rosemary was well known for her ability to love and care for each person she met, especially children. Her love and passion for children was exemplified when she was at work for the Marysville School District. She worked for the district for over 30 years as a speech pathologist and then as a school nurse. Children and families of Marysville and the Tulalip Tribes knew she had the best interest of their children. She attended

sporting events, powwows, art festivals, concerts, fairs, stickgames, sweatlodge ceremonies and anything which connected her to a celebration of life, youth, and culture. She loved the Native American culture and enjoyed beading, crafts, baking, bargain shopping, and listening to Native stories and songs. Rosemary loved “her girls” Pixie Owyen and Nessie Hatch. She adopted additional grandkids Danika, Nate, Diana, Jeramiaha, Francis and Barbara. The Tulalip Tribes adopted her as an honorary Tulalip Tribal member.

Rosemary felt blessed to have so many family and friends who loved her. She would want you to keep going, live life to the fullest, learn new things and never give up.





Pacific Coast Memorials

Original designs - Sandblasting- Sculpting
Large inventory - Quick turnaround
unbeatable prices



www.pacificcoastmemorials.com 5703 Evergreen Way, Everett WA 98203 1.800.628.3042

Court Notices

THE TULALIP COURT Tulalip Indian Reservation, Tulalip, WA No. TUL-CV-P0-2018-0413, Summons by Publication to Jessie Patricia Henry, Petitioner, vs. Robert Lee Morrison, Respondent. The TULALIP TRIBES to: Robert Lee Morrison. YOU ARE HEREBY SUMMONED to appear on March 6, 2019 at 1:30 p.m., at the Tulalip Tribal Court, 6332 31st Ave NE, Suite B, Tulalip, WA 87271 and respond to the petition alleging an act of domestic violence pursuant to the provisions of the Tulalip Tribal Code, Chapter 4.25, et. Esq. If you fail to respond, an order of protection will be issued against you for a minimum of one year from the date you are required to appear. A temporary order of protection has been issued against you, (contact the court for a complete copy of the temporary order).

SUMMONS BY PUBLICATION TUL-CV-CS-2012-0523, Tulalip Tribal Court, Tulalip WA, TCSP #977 TULALIP CHILD SUPPORT PROGRAM, Petitioner, vs. Brian Patrick Green (DOB 05/08/1979) TO: BRIAN PATRICK GREEN: YOU ARE HEREBY NOTIFIED that on October 17, 2018, a Summons and Motion for Modification of Child Support were filed in the above-entitled Court Pursuant to Chapters 2.10 and 4.10 of the Tulalip Tribal Code. This is regarding child support for CSG & CCG. You are hereby summoned to appear and defend the above entitled action in the above entitled court and answer within 14 days of the last date of publication in Tulalip Tribal Court, 6632 31st Ave NE, Tulalip, WA 87271. NOTICE: You have important legal rights and you must take steps to protect your interests. IF YOU FAIL TO ANSWER AND/OR APPEAR JUDGMENT WILL BE RENDERED AGAINST YOU. Date first published: January 23, 2019.

TUL-CV-YG-2018-0321. SUMMONS BY PUBLICATION Tulalip Tribal Court, Tulalip WA. In Re the Guardianship of: C. L. B. I. TO: Ashley Harrison and David Ivarra: YOU ARE HEREBY NOTIFIED that a Petition for Guardianship (Youth) was filed in the above-entitled Court pursuant to TTC 4.05. You are hereby summoned to appear and defend regarding the above entitled action at a hearing on February 14, 2019 at 1:30 p.m. in Tulalip Tribal Court, 6332 31st Ave NE, Suite B, Tulalip, WA 98271. NOTICE: You have important legal rights and you must take steps to protect your interests. IF YOU FAIL TO ANSWER JUDGMENT WILL BE RENDERED AGAINST YOU. Date first published: December 15, 2018.

NOTICE BY PUBLICATION TUL-CV-F0-2019-0001, TULALIP TRIBAL COURT for the Tulalip Indian Reservation and 0063 TULALIP MARINA, Petitioner, vs. 36 CRAB POTS TO: MATTHEW KIERAN MOSES: YOU ARE HEREBY NOTIFIED that on January 2, 2019, a Petition for Forfeiture of Abandoned Property was filed in the above-entitled Court Pursuant to Chapter 15.30.110 and 15.30.130 of the Tulalip Tribal Code. This is for the seizure of 36 crab pots. On December 5, 2018 you were mailed notice by 1st class and certified mail that you had 7 days to remove your crab pots from the Tulalip Marina or they would be seized as abandoned property and storage fees would start to accrue in the amount of \$50.00 per day. As of December 13, 2018 your crab pots were seized and the \$50.00 a day storage fees started to accrue. To defend the seizure of the 36 crab pots, you must make application for their return by filing such request under the above mentioned cause number at the Tulalip Tribal Court, 6332 31st Ave NE, Suite B, Tulalip, WA 87271. NOTICE: You have important legal rights and you must take steps within 90 days from the 1st publishing of this NOTICE to protect your interests. FAILURE TO FILE A RESPONSIVE PETITION WITHIN THE TIME ALLOWED MAY RESULT IN FOREFEITURE OF THE LISTED PROPERTY. Date first published January 12, 2019.

TUL-CV-YI-2018-0230 SUMMONS BY PUBLICATION Tulalip Tribal Court, Tulalip WA. In Re the Welfare of P.O.G.B. TO: Andrew J. Renteria: YOU ARE HEREBY NOTIFIED that a Motion to Establish Paternity was filed in the above-entitled Court pursuant TTC 4.05. You are hereby summoned to appear and defend regarding the above entitled action at a hearing on March 12, 2019 at 11:00 am in Tulalip Tribal Court, 6332 31st Ave NE, Suite B, Tulalip, WA 98271. NOTICE: You have important legal rights and you must take steps to protect your interests. IF YOU FAIL TO ANSWER JUDGMENT WILL BE RENDERED AGAINST YOU. Date first published: January 19, 2019

IN AND FOR THE COUNTY OF STEVENS SUMMONS BY PUBLICATION – DEPENDENCY, STATE OF WASHINGTON TO WHOM IT MAY CONCERN and TO: JASON SCOTT BUSBY AND ANYONE LESE CLAIMING A PATERNAL INTEREST in Ryder Lee Haines, DOB: 04-29-2016, Dependency Petition 18-7-00149-33, filed September 12, 2018, and Amended Petition filed December 3, 2018. A Dependency Petition has been filed in the above court. A Fact-Finding hearing will be held on this matter on February 25, 2019, at 9:00 a.m. at the Stevens County Court, 215 S. Oak St., Colville, WA 99114. YOU SHOULD BE PRESENT AT THIS HEARING. THE HEARING WILL DETERMINE IF YOUR CHILD IS DEPENDENT AS DEFINED IN RCW 13.34.030(6). THIS BEGINS A JUDICIAL PROCESS COULD RESULT IN PERMANENT LOSS OF YOUR PARENTAL RIGHTS. IF YOU DO NOT APPEAR AT THE HEARING, THE COURT MAY ENTER A DEPENDENCY ORDER IN YOUR ABSENCE. To request a copy of the Notice, Summons and Dependency Petition, call DCYF at (509) 685-5660. To view information about your rights in this proceeding, go to www.atg.wa.gov/DPY.aspx. PATTY CHESTER, Stevens County Clerk.

Case No. MUC-P0-10/18-144 In Re the Protection of: J.S., DOB:03/06/1960, an elder/vulnerable adult vs. VERNON CULTEE, DOB:12/29/1978, Respondent NOTICE OF HEARING ON PROTECTION ORDER PETITION TO: VERNON CULTEE, DOB:12/29/1978. IT IS HEREBY ORDERED THAT the previously entered temporary protection order remains in full force and effect. In particular: The respondent is Restrained from committing or threatening to commit physical harm, bodily injury, assault, including sexual assault against the vulnerable adult and from molesting, harassing, or stalking the elder/vulnerable adult. Respondent is Restrained from committing or threatening to commit acts of abandonment, abuse, neglect, or financial exploitation against the elder/vulnerable adult. The respondent is Excluded from the elder/vulnerable adult's residence. The respondent is Restrained from coming near and from having any contact with the elder/vulnerable adult, in person or through others, by phone, mail, or any means, directly or indirectly, except through an attorney, or mailing or delivery by a third party of court documents. Respondent is Prohibited from knowingly coming within, or knowingly remaining within 500 feet (distance) of the elder/vulnerable adult and his or her residence. A violation of this order may subject respondent to arrest and criminal prosecution under tribal and/or state law. The protection order expires February 28th, 2019, but may be renewed prior to its expiration. Next hearing: February 28th, 2019 at 10:00 A.M. Parties are responsible for updating the court as to any change of service address. SO ORDERED this 27th day of December, 2018. /s/ GARRY BASS, JUDGE OF THE MUCKLESHOOT COURT OF JUSTICE

TUL-CV-YG-2019-0030. SUMMONS BY PUBLICATION Tulalip Tribal Court, Tulalip, WA. In re the Guardianship of A.C. Thomas W. Monger and Joshua Longley, Petitioners, TO: Latasha J. Bagley and Douglas M. Campbell (Respondents): YOU ARE HEREBY NOTIFIED that a Petition for Youth Guardianship was filed in the above-entitled Court pursuant to TTC 4.05 regarding A. C.. You are hereby summoned to appear and defend the above entitled action in the above entitled Court and answer on March 14, 2019 at 2:00 PM in Tulalip Tribal Court, 6332 31st Ave NE – Suite B, Tulalip, WA 98271. NOTICE: You have important legal rights and you must take steps to protect your interests. IF YOU FAIL TO ANSWER JUDGMENT WILL BE RENDERED AGAINST YOU. Date first published: February 2, 2019.

SUMMONS BY PUBLICATION TUL-CV-CS-2018-0397, Tulalip Tribal Court, Tulalip WA, TCSP #2208 TULALIP CHILD SUPPORT PROGRAM, Petitioner, vs. Rudolfo Flores, Jr. (DOB 01/02/1986) TO: RUDOLFO FLORES, JR.: YOU ARE HEREBY NOTIFIED that on November 30, 2018, a Summons and Petition to Establish a Child Support Order were filed in the above-entitled Court Pursuant to Chapters 2.10 and 4.10 of the Tulalip Tribal Code. This is child support for LEF, JAF, RF III. You are hereby summoned to appear and defend the above entitled action in the above entitled court and answer within 21 days of the last date of publication in Tulalip Tribal Court, 6632 31st Ave NE, Tulalip, WA 87271. NOTICE: You have important legal rights and you must take steps to protect your interests. IF YOU FAIL TO ANSWER AND/OR APPEAR JUDGMENT WILL BE RENDERED AGAINST YOU. Date first published: December 22, 2018.

SUMMONS BY PUBLICATION TUL-CV-CS-2018-0396, Tulalip Tribal Court, Tulalip WA, TCSP #2293 TULALIP CHILD SUPPORT PROGRAM, Petitioner, vs. David Little Bear Ivarra (DOB 10/11/1984) TO: DAVID LITTLE BEAR IVARRA: YOU ARE HEREBY NOTIFIED that on November 30, 2018, a Summons and Petition to Establish a Child Support Order were filed in the above-entitled Court Pursuant to Chapters 2.10 and 4.10 of the Tulalip Tribal Code. This is child support for MEI. You are hereby summoned to appear and defend the above entitled action in the above entitled court and answer within 21 days of the last date of publication in Tulalip Tribal Court, 6632 31st Ave NE, Tulalip, WA 87271. NOTICE: You have important legal rights and you must take steps to protect your interests. IF YOU FAIL TO ANSWER AND/OR APPEAR JUDGMENT WILL BE RENDERED AGAINST YOU. Date first published: December 22, 2018.

SUMMONS BY PUBLICATION TUL-CV-CS-2018-0352, Tulalip Tribal Court, Tulalip WA, TCSP #2407 TULALIP CHILD SUPPORT PROGRAM, Petitioner, vs. Raken James (DOB 08/10/1989) TO: RAKEN JAMES: YOU ARE HEREBY NOTIFIED that on October 17, 2018, a Summons and Petition for Full Faith and Credit of a Foreign Order of Child Support were filed in the above-entitled Court Pursuant to Chapter 2.10 of the Tulalip Tribal Code. This is child support for AAJ. You are hereby summoned to appear and defend the above entitled action in the above entitled court and answer within 30 days of the last date of publication in Tulalip Tribal Court, 6632 31st Ave NE, Tulalip, WA 87271. NOTICE: You have important legal rights and you must take steps to Protect your interests. IF YOU FAIL TO ANSWER AND/OR APPEAR JUDGMENT WILL BE RENDERED AGAINST YOU. Date first published: December 22, 2018.

TUL-CV-YI-2018-0407 and TUL-CV-YI-2018-0408. SUMMONS BY PUBLICATION Tulalip Tribal Court, Tulalip WA. In Re the Welfare of: L. F. A. L. and B. A. L., JR. TO: JAMACIA FAYE KEELINE and BRANDON ANTHONY LLOYD: YOU ARE HEREBY NOTIFIED that a Petition for a Youth in Need of Care was filed in the above-entitled Court pursuant to TTC 4.05. You are hereby summoned to appear and defend regarding the above entitled action at a hearing on February 12, 2019 at 11.30 a.m. in Tulalip Tribal Court, 6332 31st Ave NE, Suite B, Tulalip, WA 98271. NOTICE: You have important legal rights and you must take steps to protect your interests. IF YOU FAIL TO ANSWER JUDGMENT WILL BE RENDERED AGAINST YOU. Date first published: December 22, 2018.

THE TULALIP COURT Tulalip Indian Reservation, Tulalip, Lee Morrison WA No. TUL-CV-AH-2019-0006, Summons by Publication. Chryssilla James, Petitioner, vs. Arias E Becket, Respondent. The TULALIP TRIBE. To: Arias E Becket, YOU ARE HEREBY SUMMONED to appear on March 6, 2019 at 2:30 p.m., at the Tulalip Tribal Court, 6332 31st Ave NE, Suite B, Tulalip, WA 87271 and respond to the petition of Reissuance of Temporary Order for Protection.

THE TULALIP COURT Tulalip Indian Reservation, Tulalip, Lee Morrison WA No. TUL-CV-AH-2019-0007, Summons by Publication. Tamzyn Wynn, Petitioner, vs. Arias E Becket, Respondent. The TULALIP TRIBE. To: Arias E Becket, YOU ARE HEREBY SUMMONED to appear on March 6, 2019 at 3:00 p.m., at the Tulalip Tribal Court, 6332 31st Ave NE, Suite B, Tulalip, WA 87271 and respond to the petition of Reissuance of Temporary Order for Protection.

TUL-CV-YI-2019-0011 SUMMONS BY PUBLICATION Tulalip Tribal Court, Tulalip WA. In Re the Welfare of B. P.-W. TO: RAYMOND WALLACE PAUL, JR.: YOU ARE HEREBY NOTIFIED that a Youth In Need of Care Case was filed in the above-entitled Court pursuant to TTC 4.05 regarding the above mentioned youth. You are hereby summoned to appear and defend regarding the above entitled action at a hearing on March 5, 2019 at 10:30 A.M. in Tulalip Tribal Court, 6332 31st Ave NE, Suite B, Tulalip, WA 98271. NOTICE: You have important legal rights and you must take steps to protect your interests. IF YOU FAIL TO ANSWER JUDGMENT WILL BE RENDERED AGAINST YOU. Date first published: January 26, 2019.

TUL-CV-YG-2018-0414 and TUL-CV-YG-2019-0003. SUMMONS BY PUBLICATION Tulalip Tribal Court, Tulalip, WA. In re the Guardianship of D.H.H. and M.L.H. TO: Patrice Hundiye and Hassan Hundiye: YOU ARE HEREBY NOTIFIED that on December 20, 2018 and January 4, 2019 Petitions for Guardianship were filed in the above-entitled Court pursuant to TTC 4.05 regarding D.H.H. and M.L.H. You are hereby summoned to appear and defend the above entitled action in the above entitled Court and answer on March 14, 2019 at 1:30 PM in Tulalip Tribal Court, 6332 31st Ave NE – Suite B, Tulalip, WA 98271. NOTICE: You have important legal rights and you must take steps to protect your interests. IF YOU FAIL TO ANSWER JUDGMENT WILL BE RENDERED AGAINST YOU. Date first published: January 26, 2019.



TULALIP MINOR TRUST ACCOUNT

The month of February is the only time this year when you can change investment options. Below is a quick explanation of the accounts. In order to change the investment option, it is only a quick easy form—just let us know if you need one.

We will be having an investment information meeting on
Wednesday, February 6, 2019
12:00 PM
at
Betty Taylor Early Learning Academy
Lunch Provided

Due to low attendance the last few years, we will NOT have an afternoon session. If you can't make this lunch session, please contact me at the phone or email below so we can meet one-on-one.

Pool #1 – Conservative Investment:

ELECT TO PARTICIPATE IN THIS GROUP (OPTIONAL)

The Conservative Investment Pool option is an investment option with the primary objective of preserving capital (deposited per capita funds), while providing a competitive rate of return that is intended to keep up with inflation plus a little additional return.

Pool #2 – Balanced Portfolio:

DEFAULT – if you do not select an option, this option will automatically be where your child's money is invested.*recent change in June 2016.

The Balanced Portfolio option is an age-based investment strategy with diversified portfolios (a mix of stocks and bonds) becoming increasingly more conservative as the age group nears the distribution age of 18, subject to Trust provisions. There will be three age groups:

- Balanced #1 (Ages 15 and Older) (10% Stocks, 90% Bonds & Money Market)
- Balanced #2 (Ages 10–14) (50% Stocks, 50% Bonds & Money Market)
- Balanced #3 (Ages 0–9) (65% Stocks, 35% Bonds & Money Market)

If you elect Pool #2, the age of your child will determine which of the three portfolios their funds will be invested in. (Example: an 11 year old will be in the #2 Age Group, until the child reaches age 15, when they will automatically shift to the #1 Age Group).

Any questions regarding the meeting or the accounts, please contact Rosie at the Enrollment Office at 360-716-4298 or rtopaum@tulaliptribes-nsn.gov.

TDS-28340

Brought to you by the
Inclusive Advocacy Committee

Parent Support Group

The Tulalip Inclusive Advocacy Committee is hosting a series of Parent Support groups for parents/guardians of Native Students with special needs.

5:00pm-6:30pm
Don Hatch Youth Center - Youth Council Room
6700 Totem Beach Rd. Tulalip, WA 98271

February 21st, 2019

Topic: Support Services for youth
Who: Youth Finance, Behavioral Health, Tulalip Disability Program

March 21st, 2019

Topic: Empowering, Teaching & Supporting students & families
Who: Casl Olson, M.A., LMHC/LPC.
Co-author of "Your Child Has Autism. Now What?:
A collaborative guide for parents of a newly-diagnosed child"

April 25th, 2019

Topic: Front Door Event- Snohomish County support services for students/parents.
Who: Social & Health Services: DDA., ARC, etc.

May 16th, 2019
TBA

For questions or information contact:

Joseph Boon, Special Needs Advocate
(360) 913-7802
jboon@tulaliptribes-nsn.gov

Amy Sheldon, IAC Chairwoman
(425) 328-0812
Email: amysheld@msn.com



Painters & Allied Trades

- Welcoming and open to ALL people
- Many Apprentice programs for enrolled Natives
- Painters, DW Finishers, Glaziers, Carpet Layers, etc.
- Snacks

DATE: **March 21**
TIME: **3 – 5 PM**
LOCATION: RM 264, Admin. Bldg.



* RSVP: 360-716-4888, Higher ED
or highered@tulaliptribes-nsn.gov



- Why WSU? Close to home & programs aligned with your passion.
- Diverse & close-knit community
- Support staff & faculty dedicated to student success
- Snacks

Date: **March 14**
Time: **3 – 5 PM**
Location: RM 264, Admin Bldg.

* RSVP: 360-716-4888, Higher ED
or highered@tulaliptribes-nsn.gov